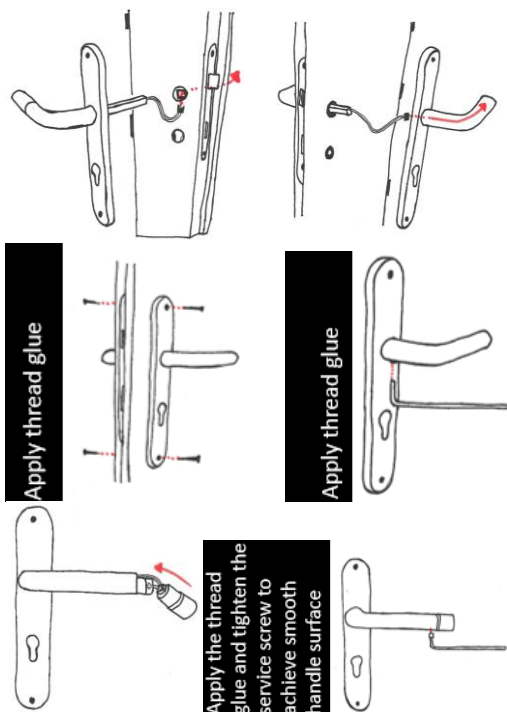


## INSTALLATION

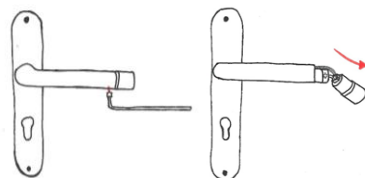


To clean the device use a soft, dry cloth. Do not use any chemical cleaners.

The manufacturer recommends throughout the product lifecycle to do a regular check that all screws are tightened. These include screws securing the prism going through the door.

## INSTRUCTIONS FOR THE BATTERY REPLACEMENT

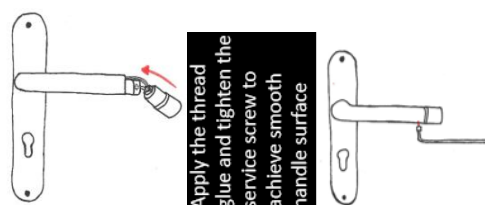
If the device constantly flashes every 1 second, replace the battery.



Using a wrench, unscrew the locking screw of the handle blanking and pull the blanking.

Replace your old battery.

Only recommended battery type is Varta ER AA WC / WCs (3.6V / 2500mAh) - Ordering at [handLED.EU](http://handLED.EU). An alternative could be Varta ER ½AA WC / WCs (3.6V / 1200mAh).



### **Notice:**

Use of this device can cause epileptic seizures in people who are prone to do so.

The equipment is under warranty for 12 months.

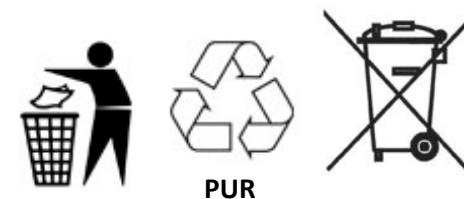
The device is intended for indoor use.

All other uses are prohibited.

For claims, please download the claiming conditions at [warninghandle.com](http://warninghandle.com)

No warranty can be applied if the device:

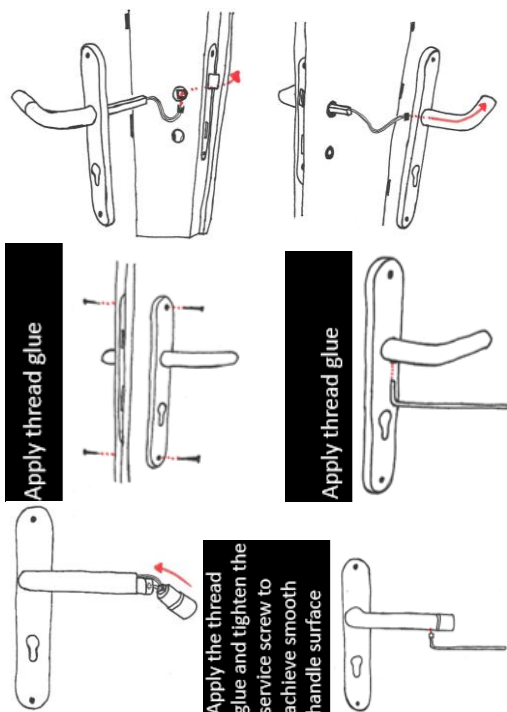
- experienced severe shock,
- experienced an excessive force during use (over 200N)
- or used differently than normal and intended



Producer:  
KOM support s.r.o., IČO 28349911,  
Vyškov, Brněnská 8, PSČ 682 01

Components manufactured in the Czech Republic and China

## INSTALLATION

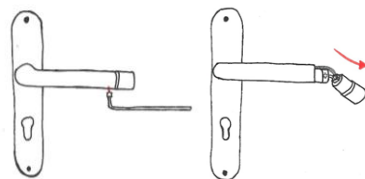


To clean the device use a soft, dry cloth. Do not use any chemical cleaners.

The manufacturer recommends throughout the product lifecycle to do a regular check that all screws are tightened. These include screws securing the prism going through the door.

## INSTRUCTIONS FOR THE BATTERY REPLACEMENT

If the device constantly flashes every 1 second, replace the battery.



Using a wrench, unscrew the locking screw of the handle blanking and pull the blanking.

Replace your old battery.

Only recommended battery type is Varta ER AA WC / WCs (3.6V / 2500mAh) - Ordering at [handLED.EU](http://handLED.EU). An alternative could be Varta ER ½AA WC / WCs (3.6V / 1200mAh).



### **Notice:**

Use of this device can cause epileptic seizures in people who are prone to do so.

The equipment is under warranty for 12 months.

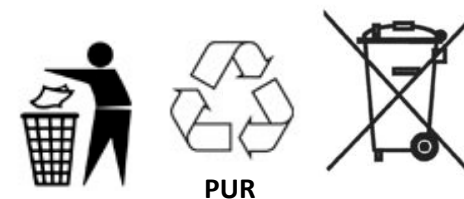
The device is intended for indoor use.

All other uses are prohibited.

For claims, please download the claiming conditions at [warninghandle.com](http://warninghandle.com)

No warranty can be applied if the device:

- experienced severe shock,
- experienced an excessive force during use (over 200N)
- or used differently than normal and intended



Producer:  
KOM support s.r.o., IČO 28349911,  
Vyškov, Brněnská 8, PSČ 682 01

Components manufactured in the Czech Republic and China

Thanks, that you  
care

Warninghandle.com team

ENG- stainless steel interior  
door handle with integrated  
safety warning device. Light  
source: 1W LED, power 1xAA  
(3,6V)

---

---



Thanks, that you  
care

Warninghandle.com team

ENG- stainless steel interior  
door handle with integrated  
safety warning device. Light  
source: 1W LED, power 1xAA  
(3,6V)

---

---

